



Gold Jackpot Project

A premier gold-copper-silver-tellurium exploration project located in Elko County, Nevada, positioned along the highly prospective Pequop Gold-Copper Trend.

A Porphyry & Carlin-Style deposit

January 2026

Disclaimer & Forward-Looking Statements

Disclaimer - - Certain statements contained herein, as well as oral statements that may be made by Richard R. Redfern, CPG #10717 and QP, may constitute “forward looking statements.” Any reference to a “Historical Resource” is considered historical in nature and is based on prior data and reports prepared by previous property owners and should not be construed or promoted as a current mineral resource. The drillhole sample assays presented herein are derived from drilling by Tenneco Minerals in 1989-1990, and prospecting conducted in 2004-2022. All core sampling, sample handling, chain of custody procedures, and geochemical analyses from this program were conducted in accordance with industry standard QA/QC protocols, from initial sampling through laboratory processing and final analytical reporting under the supervision of Richard R. Redfern, CPG #10717, a Qualified Person as defined by NI 43 101. All analyses were performed by an ISO certified analytical laboratory. All data, both historical and recent, have been reviewed, evaluated, and verified to the extent possible and are considered suitable for use at this early stage of the exploration project by Richard R. Redfern.

The content of this presentation, including any historical information, are provided for informational purposes only and do not constitute an offer to sell or a solicitation to purchase any securities referenced herein.

Forward looking statements - This presentation includes certain forward-looking statements about future events and/or financial results which are forward looking in nature and subject to risks and uncertainties. Forward-looking statements include without limitation, statements regarding the company’s plans, goals or objectives and future completion of mine feasibility studies, mine development programs, capital and operating costs, production, potential mineralization and reserves, exploration results and future planning and objectives of Cat Strategic Metals. Forward-looking statements can generally be identified by forward-looking terminology such as “may,” “will,” “expect,” “intend,” “estimate,” “anticipate,” “believe,” or “continues” or the negative thereof or variations thereon or similar terminology. There can be no assurance that such statements will prove to be accurate and actual results and future events could differ materially from those anticipated in such statements. Important factors that could cause actual results to differ materially from expectations include risks associated with mining generally, and pre-development stage projects in particular including but not limited to changes in general economic conditions, litigation, legislative, environmental and other judicial, regulatory, technological and operational difficulties, labor relations matters, foreign exchange costs & rates.

High-Grade Cu-Au-Te Porphyry & Carlin-Style Gold-Silver Discovery Potential in Lithium + Uranium Mining District

Strategic Location - Located 105 km north of Nevada Gold Mines' multi-million ounce Long Canyon open pit mine, a Carlin-style mine.

Surface Mineralization - Outcropping high-grade gold-silver-copper-bismuth enrichment with exceptional tellurium values up to 4 kg/t Te.

Porphyry Cu-Au Systems

Multiple sericitized pyritic quartz porphyry and aplitic plugs present. Similar setting to Phoenix Mine Porphyry Cu-Au area with potential for diatreme systems and copper-gold-silver skarn bodies at depth.

Carlin-Style Targets

Moderate to high-grade structurally controlled gold-silver-copper-tellurium mineralization in upper Paleozoic limy sedimentary rocks. Elko Allochthon faults and high-angle feeder faults along Range Front Target—never drill tested.

Tellurium Value-Add

Exceptional tellurium concentrations (up to 4 kg/ton Te) create dual-value opportunity for solar energy panel manufacturers and traditional mining operations.

Historical Work: Tenneco Minerals completed 27 shallow reverse circulation drillholes (1989-1990). Limited testing west of Range Front Target leaves significant upside potential.



Range Front & North Ridge Au Targets

Primary untested zones with high-angle gold-silver feeder faults for Carlin-style Au-Ag mineralization

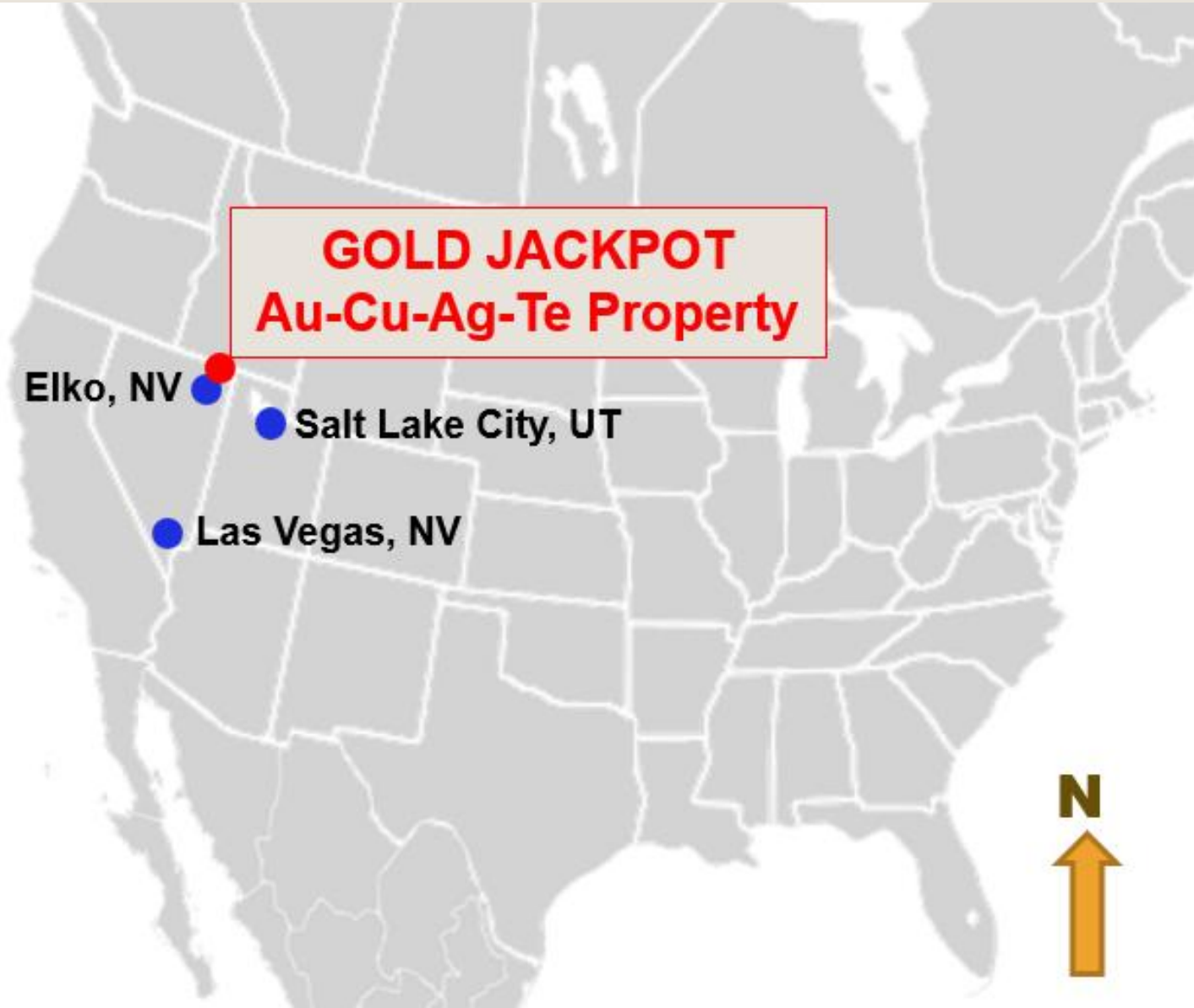


NE Nevada Lithium Target – Primary Lithium zones in Miocene claystones that are adjacent to Surge Battery Metals/Evolution Mining ores.



Prince Uranium Area - Prince U Mine just to SW of porphyries in faults in Carlin-like decalcified “sanded” Permian limestones.

Project Location, Claims & Ownership



Location

- The Gold Jackpot property is strategically positioned along the highly prospective Pequop Gold-Copper Trend and Lithium Trend in Elko County, eastern Nevada. This is a region known for world-class mineral deposits and excellent infrastructure within a 100-kilometer radius.

Land Package

- 2,996.7 acres (1,212.36 hectares)
- 145 unpatented claims

Project Interest

- 100% owned by CAT Strategic Metals

Nevada: Premier Gold-Silver-Copper Mining Jurisdiction

Top Investment Ranking

Ranked #2 jurisdiction worldwide Investment Attractiveness (Fraser Institute 2024 Annual Survey of Mining Co's - 88.69 score) and #4 in their Policy Perception Index.

Gold Production

Nevada accounts for 78% of the total U.S. gold production at 6.12 Moz in 2025 and #4 worldwide.

Low Political Risk

Major mining co's operating in the area: Nevada Gold Mines LLC, Newmont, KGHM, Rio Tinto, Kinross, McEwen Mining, and Hecla Mining.

- **Active porphyry copper / gold / lithium exploration:** Rio Tinto, Nevada Copper, McEwen, KGHM, Kinross, SSR Mining, Hecla, BCM Resources, Surge Battery Metals, Evolution Mining.
- **Consolidation trend:** Active producers will need to acquire Nevada exploration companies to augment reserves and grow production.

Gold/Copper Deposits in the Region



Pequop Gold-Copper Trend, Eastern Nevada

Long Canyon Mine – 60 miles south of Gold Jackpot. Nevada Gold Mines LLC: 3+Moz @ 2+g/t Au, open pit & underground.

Robinson Porphyry Cu Mine: KGHM operates this 100 year old major Tier 1 Porphyry Copper-(gold-PGEs) deposit.

Limousine Butte Mines: Freeport & NV Gold copper deposits with gold + antimony caps.



Carlin Trend

Gold Quarry-Carlin-Mike Cu-Bluestar-Exodus Mines - Nevada Gold Mines LLC Open Pit/Underground: +75 Moz Au with local high-grade Au & Cu orebodies.

Goldstrike Mine - Nevada Gold Mines LLC - Open Pit/Underground: +45 Moz Au.



Getchell Trend

Turquoise Ridge/Getchell Mine - Nevada Gold Mines LLC: 40Moz high-grade Carlin-style Au.

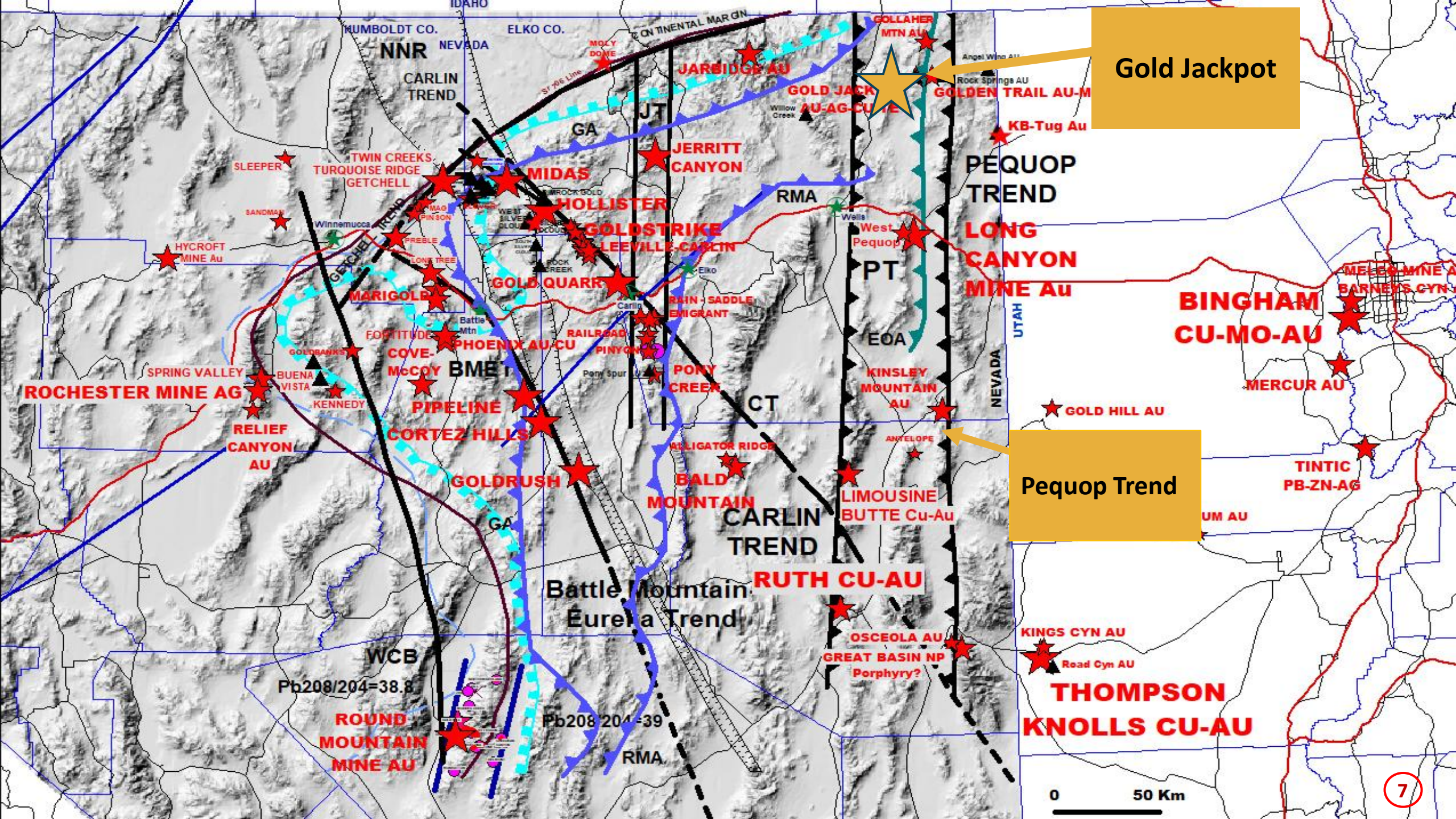
Twin Creeks Mine - Nevada Gold Mines LLC: +25 Moz Au, large open pits, Carlin-style Au.



Battle Mountain-Eureka Trend

Phoenix Copper-Gold Mine - NV Gold Mines: World-class 15Moz intrusive copper-gold deposit.

See map on the following page



Gold Jackpot

Pequop Trend

WCB
Pb208/204=38.8

Pb208/204=39

0 50 Km

High-Grade Mineralized Outcrops



Porphyry Copper Target

Target for Cu-Au diatreme and deeper porphyry below. Values to 280 g/t Ag, and to 4% Te from outcrop rock chip samples.



Mineralization

Early vein quartz with late Au-Te-Si mineralization. Yellow mineral plumbojarosite-Te visible in outcrops. *Plus 2 km Cu-Au-Ag-Pb-Zn halo indicative of deeper PCD system.*

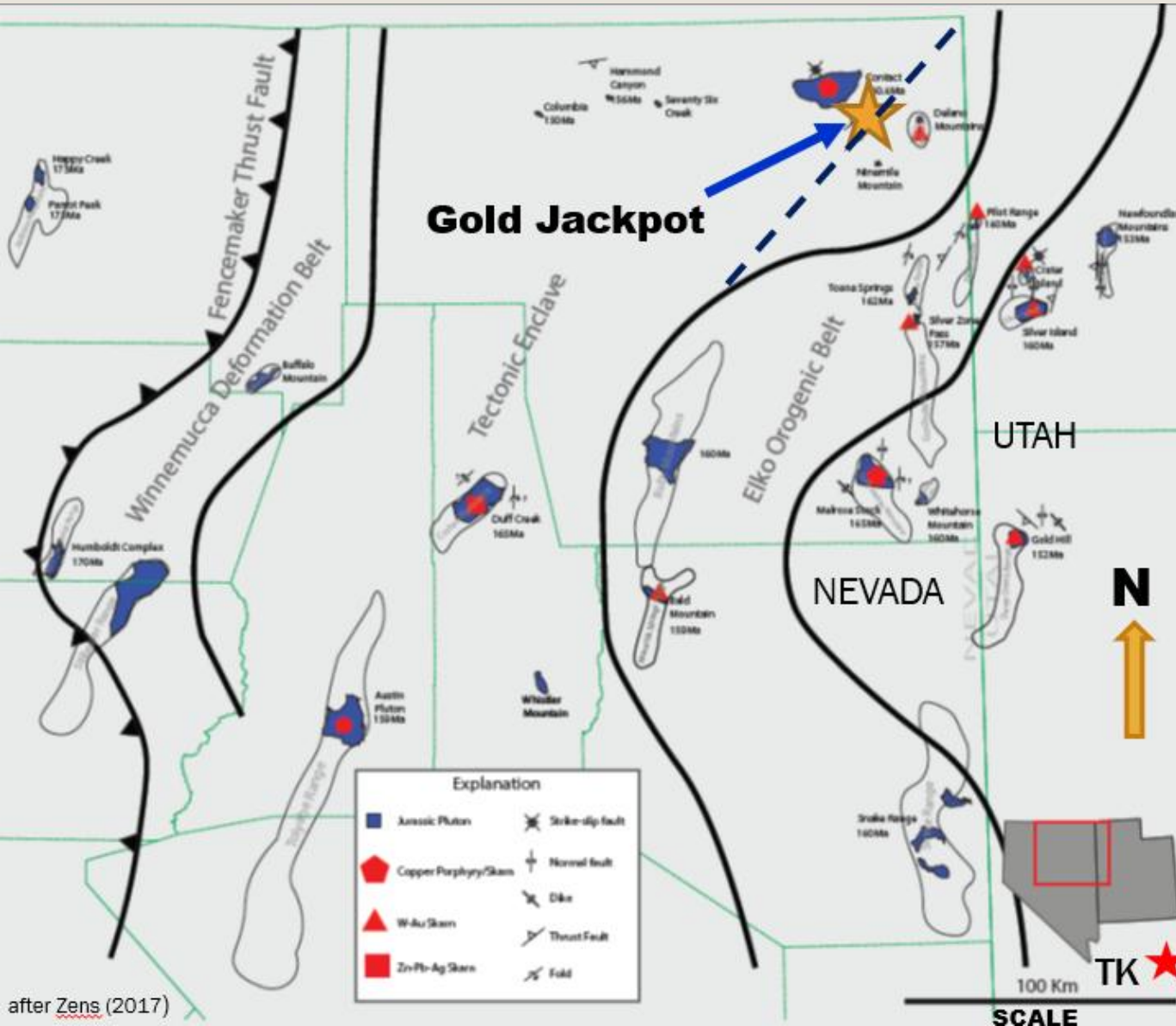


Late Faulting Carlin Au?

Late faulting with goethite and gold-silver mineralization along Carlin-style range-front fault system with high-angle feeder fault.

Northerly continuation of silica-limonite mineralization demonstrates significant exploration potential along the structural.

Jurassic Granitic Intrusives, Nevada-Utah



after Zens (2017)

Regional Geological Context

The Gold Jackpot project is positioned within a major belt of Jurassic granitic intrusives that extend across the Nevada-Utah border region.

These intrusive systems are associated with significant porphyry copper-gold mineralization throughout the region and represent a key exploration target for world-class deposits.

The presence of Jurassic-age intrusives is a critical indicator for porphyry-style mineralization in this geological province.

Large-Scale Circular Crustal Fracture Structures

Underlain By Intrusions



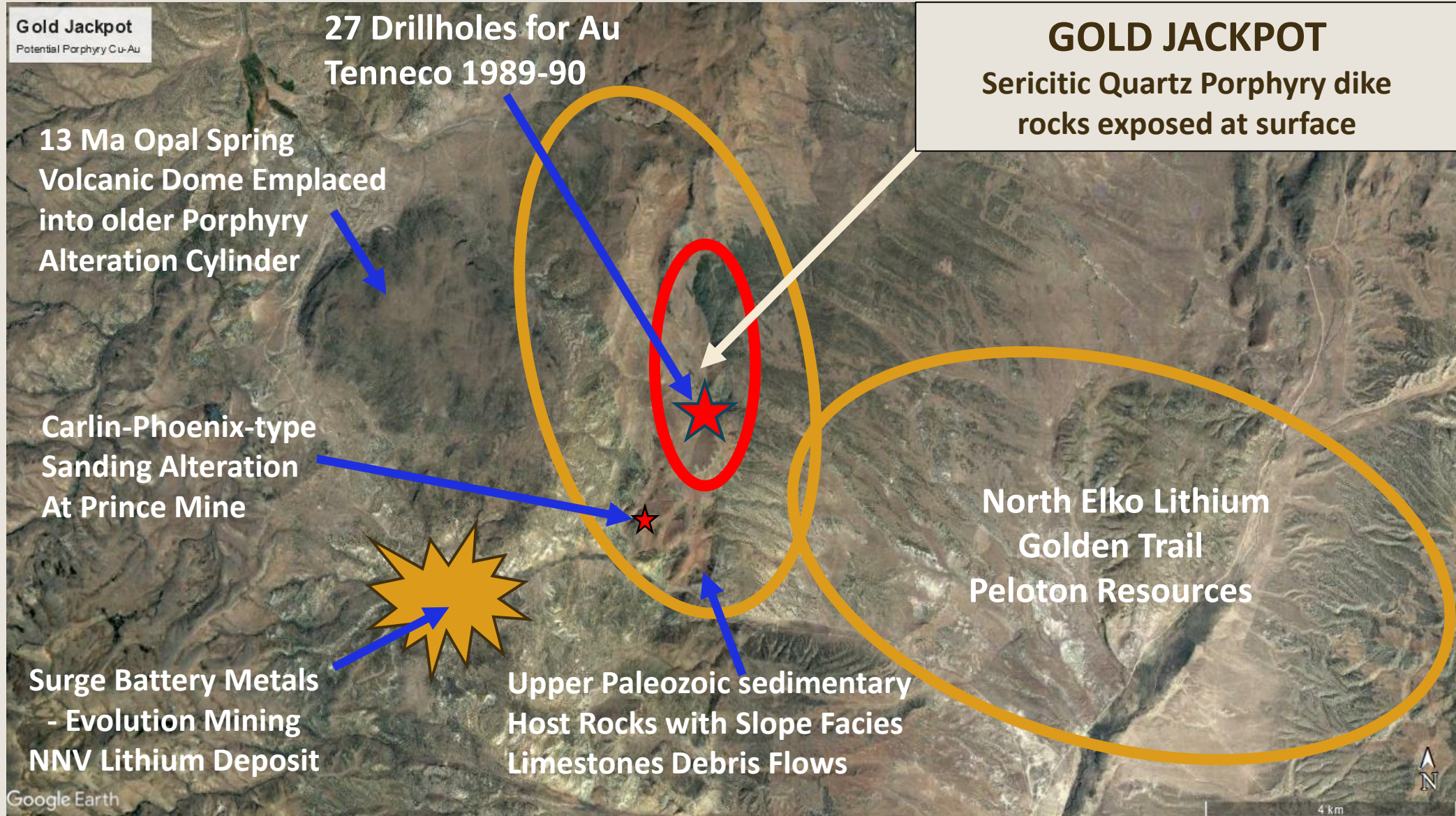
Gold Jackpot - Primary target area showing circular structural features indicative of underlying intrusive systems and associated mineralization.

Pequop Trend - Regional structural corridor hosting multiple prospects including Contact Copper, Gollaher Au, and Rock Creek Au.

Adjacent Projects - Peloton Minerals Golden Trail and other exploration projects demonstrate the district-scale potential of this mineralized system.

The Jackpot area projects map reveals large-scale circular crustal fracture structures that are characteristic of porphyry systems and represent high-priority drill targets for discovering significant copper-gold mineralization at depth.

Gold Jackpot - Vertical, structurally-controlled Copper-enriched Gold-Silver-Copper-Tellurium mineralization above possible porphyry-Diatreme

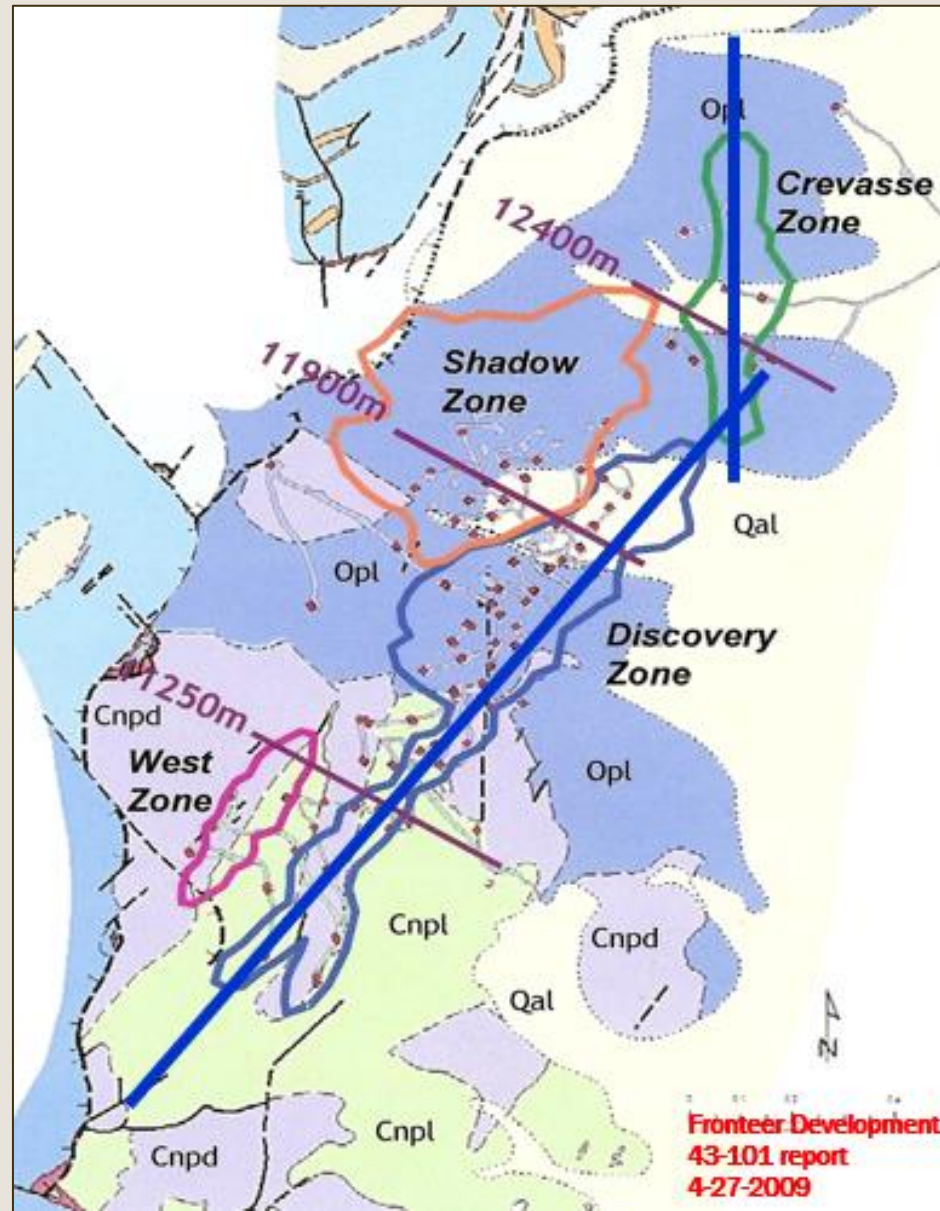


Long Canyon: Carlin-Style Gold Deposit

Long Canyon Mine
Directly south of Gold
Jackpot along the Pequop
Trend

Structural Au feeder control
of Carlin-style Eocene-age
gold-bearing fluids.

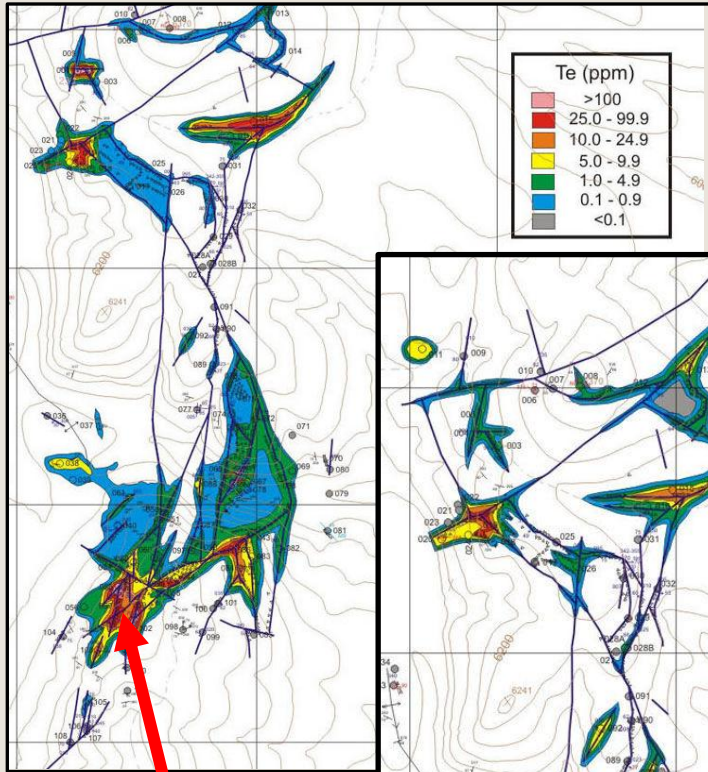
Gold deposition into altered
Paleozoic carbonate strata
and sites of karstic breccia
formation along and near
NE- and N-trending faults



NE and NS feeders
Fault Jog Gold Model

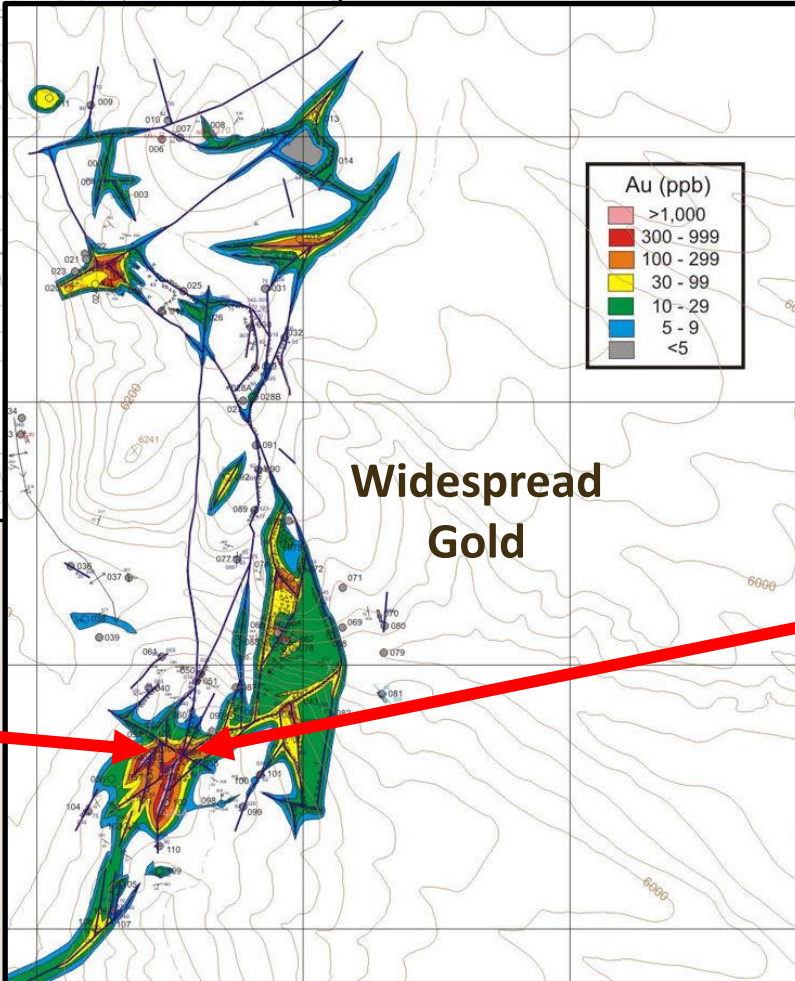
Similar structures at
Gold Jackpot: feeders
to gold-silver-copper
mineralization, from
Porphyry Cu-Au-Ag
system & overlying
diatreme breccia
mineralization, at
reasonable depths

Rock Geochem – Gold, Copper, Tellurium, Lead

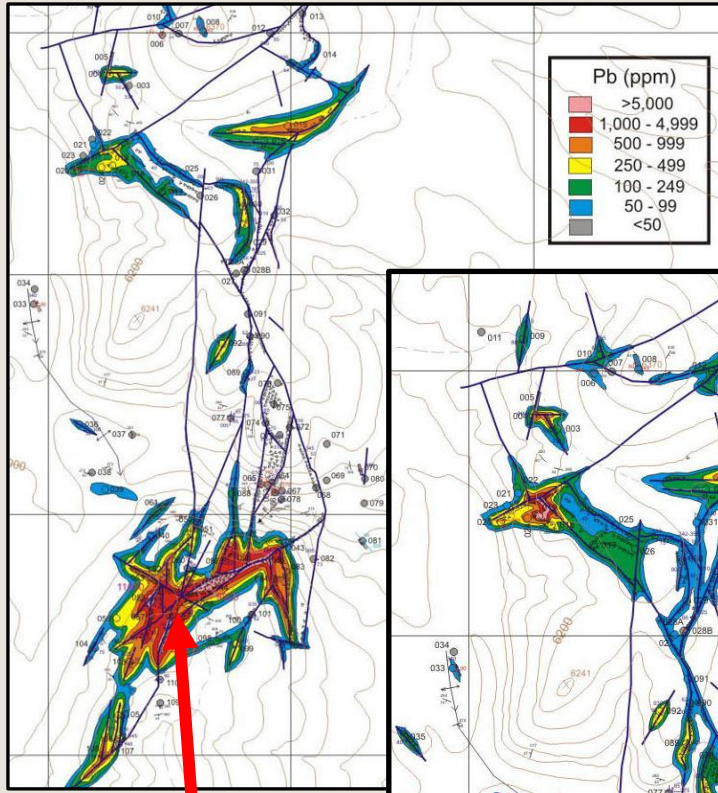


3.47 Kg/t Te

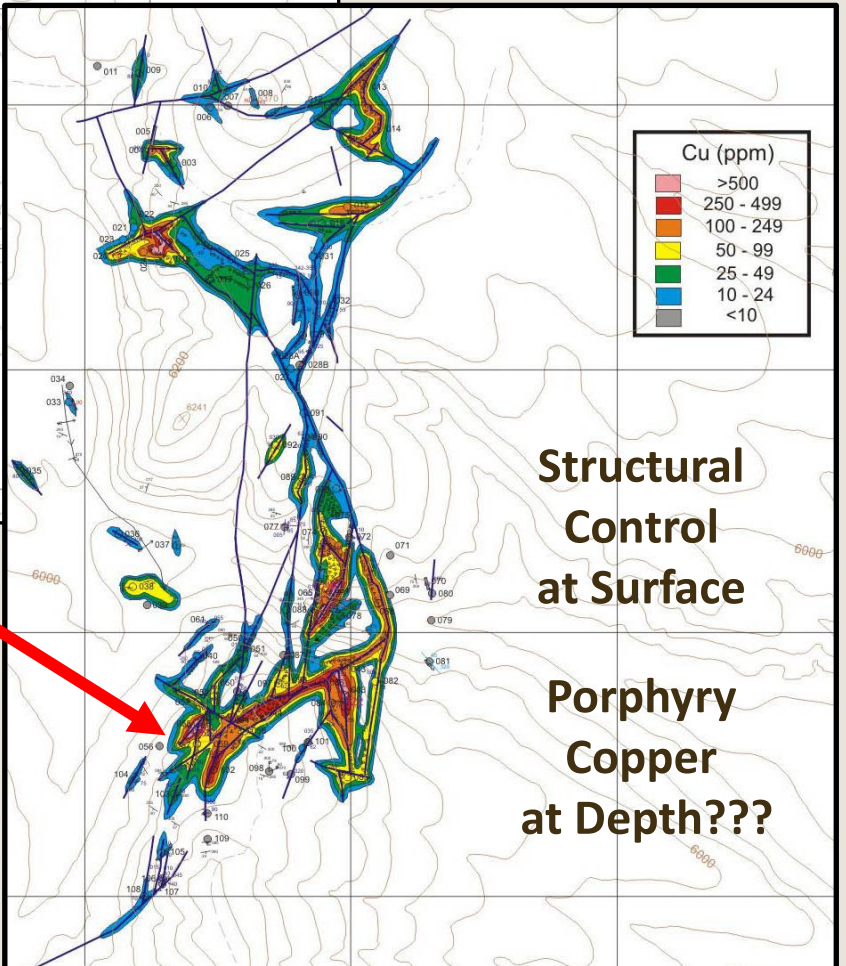
16 g/t Au



Widespread Gold



**4.84 g/t Au
239 g/t Ag
339 g/t Te
2% Lead**



Structural Control at Surface

Porphyry Copper at Depth???

Proposed Work Programs

3-D Analysis

Plot and analyze 27 Tenneco drillholes with geologic modeling of CAT Strategic Minerals geophysics data.

Remote Sensing

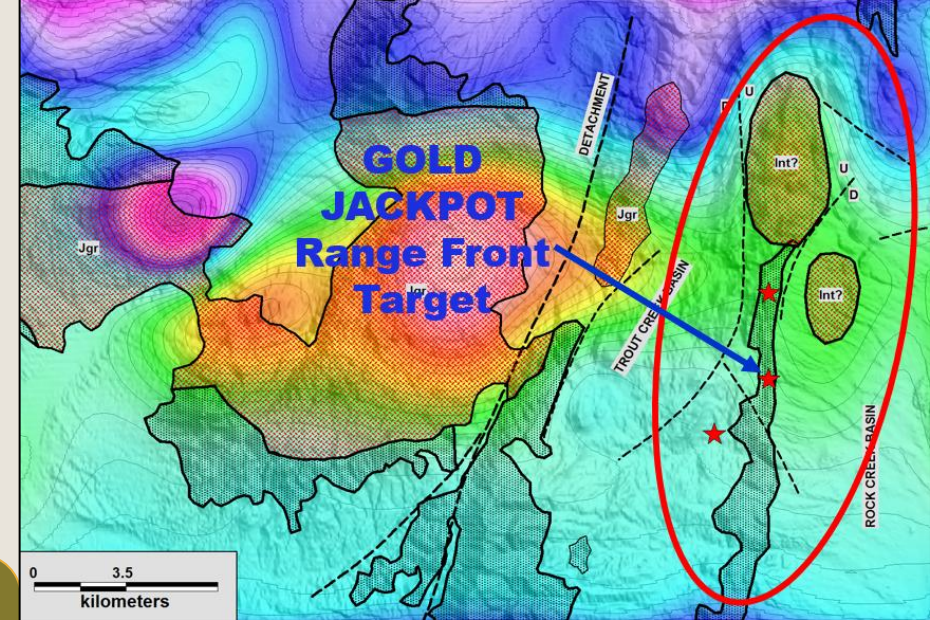
Landsat-Aster spectral image analysis combined with soil gas work and Geochem sampling of target areas.

Drilling Program

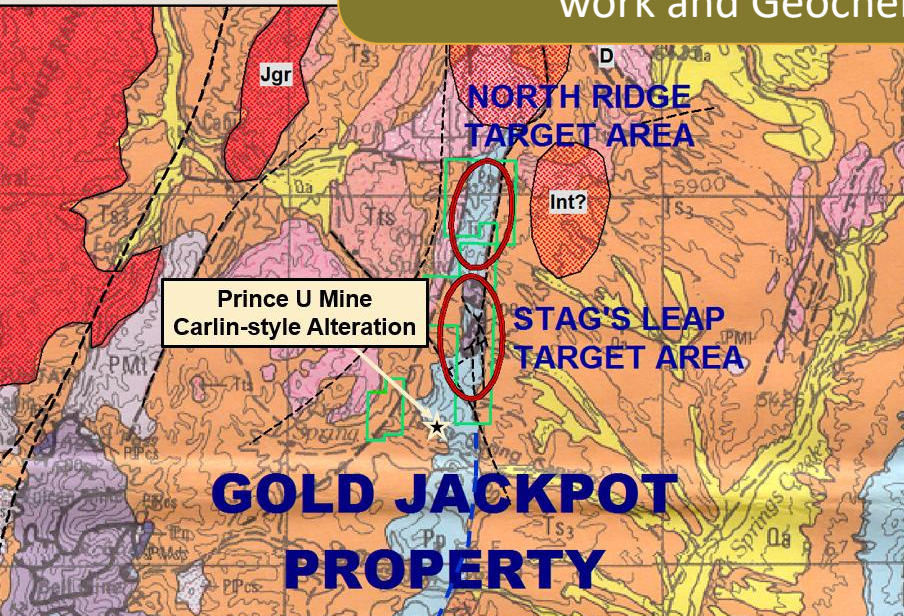
Obtain NOI permit from BLM. Drill 10 holes for Porphyry + Carlin-style Au-Ag targets, plus 2 deeper holes for Porphyry Cu-Au tests.

Tellurium Assessment

Analyze Te potential—one chip sample showed 4kg/t Te. Complete 43-101 technical report preparation.



Gold Jackpot Au-Ag-Cu-Te Regional Magnetics



Carlin-Style Range Front Au-Ag Targets



For Additional Information Contact

Tel: 604-674-3145

Email: info@catstrategic.com

**Common Shares: CSE: CAT, FRA: 8CHA,
OTC: CATTF / Warrants: CAT.WT**

Qualified Person

Mr. Richard R. Redfern, CPG #10717, is the qualified person as defined by National Instrument 43-101 who has reviewed and approved the technical contents of this document. The Qualified Person has completed sufficient work to verify the historic information on the Property, particularly in regard to neighbouring projects and historical drilling data.

Common Shares **372,553,654**

Warrants:

• Trading	– Nov/30 @ \$0.05	61,760,243
• Non-trading	– Feb/26 @ \$0.16	25,020,679
	– Apr/26 @ \$0.16	4,169,600
	– May/26 @ \$0.05	28,422,167
	– Jun/26 @ \$0.05	<u>14,349,999</u>
		133,722,688

Options:	– Feb/26 @ \$0.08	100,000
	– Jul/28 @ \$0.05	<u>10,000,000</u>
		10,100,000